



Facsimile

### LAB-GROWN DIAMOND REPORT

**Report No : SGLXD426427E**

**MUMBAI**

#### GRADING INFORMATION

Shape Round Brilliant

Carat Weight 1.50 carat

Clarity Grade VS1

Color Grade F

Cut Grade:

Proportions Excellent

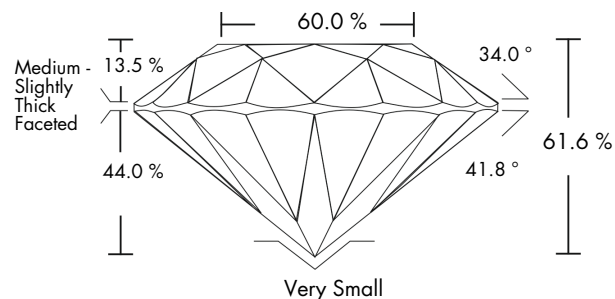
Polish Very Good

Symmetry Excellent

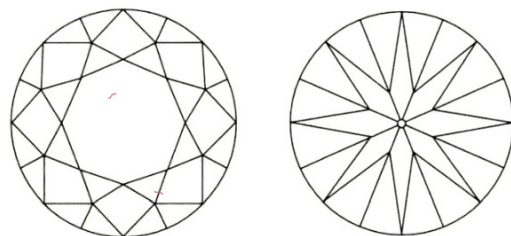
Fluorescence None

Laser Inscribed LAB GROWN SGLXD426427E

### PROPORTIONS



### CHARACTERISTICS



#### Key to symbols



Red symbols denote internal characteristics. Green and Black symbols denote external characteristics. Symbols do not usually reflect the exact shape or size of the characteristics. All characteristics may not be shown.

[www.sgl-labs.com](http://www.sgl-labs.com)

### TECHNICAL INFORMATION

Measurements 7.33 - 7.37 x 4.53 mm

Girdle Medium - Slightly Thick

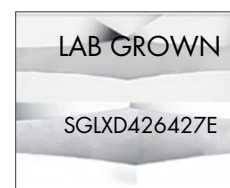
Culet Very Small

Depth 61.6 %

Table Width 60.0 %

Crown Height 13.5 %

Pavilion Depth 44.0 %



LASER INSCRIPTION



Scan the code with a smartphone to view the certificate on our website



AUTHENTICATED IN SGL



### LAB-GROWN DIAMOND REPORT

**Report No.SGLXD426427E**

**MUMBAI**

#### GRADING RESULTS

Shape Round Brilliant

Carat Weight 1.50 carat

Clarity Grade VS1

Color Grade F

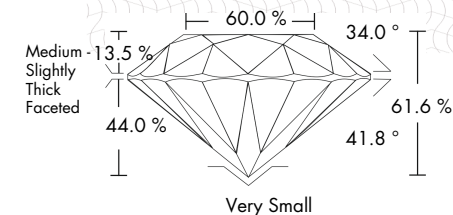
Cut Grade Value Excellent

#### ADDITIONAL GRADING INFORMATION

Cut Polish Very Good

Cut Symmetry Excellent

Fluorescence None



**Report No. SGLXD426427E**

#### GRADING INFORMATION

Shape Round Brilliant

Carat Weight 1.50 carat

Clarity Grade VS1

Color Grade F

Cut Grade :

Proportion Excellent

Polish Very Good

Symmetry Excellent

Fluorescence None

Laser Inscribed LAB GROWN SGLXD426427E

#### TECHNICAL INFORMATION

Measurements 7.33 - 7.37 x 4.53 mm

Girdle Medium - Slightly Thick

Culet Very Small

Total Depth 61.6 %

Table Width 60.0 %

Crown Height 13.5 %

Pavilion Depth 44.0 %

